

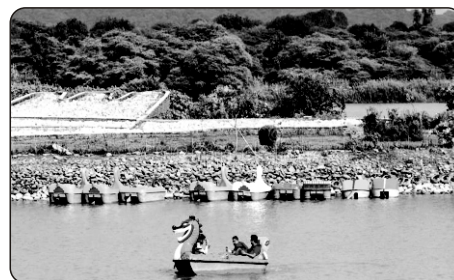


SUPREME HOLIDAYS

Shop No. 2, Krishna Niwas, Pai Nagar, Rokadia Lane, Borivali (W), Mumbai - 400 092.

E-mail : supremeholidays21@gmail.com • www.supremeholidays.in

Chandigarh-SHIMLA-MANALI-CHANDIGARH- 6 NIGHTS AND 7 DAYS



- Day 01:** Delhi-Shimla. (350 km) On Arrival at Delhi Railway Station or Airport, drive to Shimla, 8 hrs. Arrive Shimla in the evening. Rest of the day free at leisure. Overnight stay at Shimla.
- Day 02:** Shimla-Kufri-Shimla. This day after breakfast proceeds for in and around sightseeing of SHIMLA, visit KUFRI, India's one of the best holiday paradise Kufri in Shimla is beautifully tucked on an altitude of 2,622 meter. The place is a tourist hotspot for its awesome scenic and sports activities. Evening free to stroll in the famous shopping place of Shimla town "THE MALL & THE RIDGE" This large open space in the heart of town presents excellent views of the mountain ranges. Shimla's landmarks - the neo-gothic structure of Christ Church and the neo - Tudor library building- are worth seeing. Overnight stay at Shimla. (GREEN VALLEY, WILD FLOWER HALL, HALI PAD, KUFRI, INDIRA TOURIST PARK, MINI ZOO & FAGU VALLEY)
- Day 03:** Shimla-Kullu-Manali. (280 km) After breakfast leave for Manali, on the way sightseeing like Sundernagar Lake, Mandi, Pandoh Dam, Hanogi Devi Temple, Mini Vaishno Devi Temple, Kullu Shawl Factories and overnight stay at Manali.
- Day 04:** Manali Local Sight Seeing. Half Day local sightseeing of Manali "HADIMBA TEMPLE" Built in 1553 with a superbly crafted four tiered pagoda roof, it is famous for its exquisitely carved doorway. "CLUB HOUSE" The Club House with its comprehensive facilities that include a roller skating rink, an auditorium, billiards rooms, a library, a bar and restaurant makes wonderful outing for the day. "Tibetan Monastery", Van Vihar, and "VASHIST" Well known for its hot springs. There are old temples dedicated to the sage Vashistha and to Lord Rama. Overnight stay at Manali. (Hadimba Devi Temple, Club House, Manu Temple, Van Vihar, Tibetan Monastery & Vashist Bath Hot Spring Water)
- Day 05:** Manali-Rohtang Pass -Manali. (Up To Snow Line) (110 km) (Your Own Expenditure) After breakfast, enjoy excursion to Rohtang Pass - Situated at an altitude of 3979 meters above sea level offers a wide panoramic view of the mountains where you can also witness Snow. Later in the noon return to the hotel. Rest of the day free for own activities. Overnight stay at Manali.
- Day 06:** Manali-Chandigarh. (350 km) After breakfast, check out of the hotel and drive to Chandigarh. Arrival Chandigarh, Visit local sightseeing Rock garden, Rose garden and Sukhna Lake in the evening and check into the hotel. Overnight stay at Chandigarh.
- Day 07:** Chandigarh-Delhi. (250 km) After breakfast, check out of the hotel and drive to Delhi. Arrive Delhi and you are drop at Railway Station/Airport.

Package Category (Rate per Person)	OFF SEASON			PEAK SEASON		
	Min 2 Person	Min 4 Person	Min 6 Person	Min 2 Person	Min 4 Person	Min 6 Person
Deluxe	22000	18400	16600	28000	20800	20500
Super Deluxe	26100	19500	18500	32200	25600	24400

NOTE: Up to 5 Years Child Free Without sea/bed. Above 5 years will be charge 50% Extra cost.

PEAK SEASON: VALID: 10TH APR 22 TO 04TH JUL 22 & 16TH DEC 22 TO 5TH JAN 23

Package Cost Inclusions:-

- Welcome drinks on arrival in hotels. (Nonalcoholic)
- 06 Nights' accommodation on double sharing basis.
- 06 Breakfasts and 06 Dinners in the hotel.
- 07 Days individual A/C Etios/Innova Car. (A/C Working At Plain Area Hills Are Non A/C)

Package Cost Exclusions

- Air Fare/Train Fare & all entry fees at sightseeing spots
- Any additional meals other than mentioned in the inclusion
- Items of personal nature like portage, tips, laundry, telephone calls, mineral water etc.
- Optional Activities mentioned in the itinerary
- GST 5% Applicable on package Rate.



SUPREME HOLIDAYS

Shop No. 2, Krishna Niwas, Pai Nagar, Rokadia Lane, Borivali (W), Mumbai - 400 092.

E-mail : supremeholidays21@gmail.com • www.supremeholidays.in

(Chandigarh – Shimla – Manali – Dharamshala – Dalhousie – Amritsar – Chandigarh) 10 Nights and 11 Days

- Day 01:** Delhi - Shimla. (350 KM) On arrival at Delhi Airport / Railway Station and you will be met, assisted and drive to Shimla (located 350kms). Shimla was the former summer capital of British India, set amidst the snowcapped Shivalik Mountains. Which offers some of the most stunning views of the mighty Himalayas. On arrival at Shimla check in at the hotel. Overnight stay at Shimla. (8 hrs. Journey)
- Day 02:** Shimla-Kufri-Shimla. This day after breakfast proceeds for in and around sightseeing of SHIMLA, visit KUFRI, India's one of the best holiday paradise Kufri in Shimla is beautifully tucked on an altitude of 2,622 meter. The place is a tourist hotspot for its awesome scenic and sports activities. Evening free to stroll in the famous shopping place of Shimla town - "THE MALL & THE RIDGE" This large open space in the heart of town presents excellent views of the mountain ranges. Shimla's landmarks - the neo- gothic structure of Christ Church and the neo - Tudor library building - are worth seeing. Overnight stay at Shimla. (GREEN VALLEY, WILD FLOWER HALL, HALI PAD, KUFRI, INDIRA TOURIST PARK, MINI ZOO & FAGU VALLEY)
- Day 03:** Shimla-Manali. (280 KM) After breakfast leave for Manali, on the way sight-seeing like Sundernagar Lake, Mandi, Pandoh Dam, Hanogi Devi Temple, Mini Vaishno Devi Temple, Kullu Shawl Factories and overnight stay at Manali.
- Day 04:** Manali-Rohtang Pass-Manali. (Up to snow line) (110 KM) (Your Own Expenditure)
Manali to snow point (Rohtang Pass) and on the way back from snow point visit Solang Valley and overnight stay at Manali. (Nehru Kund, Kothi, Rahala Fall, Marhi, Rani Nallah, Rohtang Pass & Solang Valley)
- Day 05:** Manali Local. Half Day local sightseeing of Manali "HADIMBA TEMPLE" Built in 1553 with a superbly crafted four tiered pagoda roof, it is famous for its exquisitely carved doorway. "CLUB HOUSE" The Club House with its comprehensive facilities that include a roller skating rink, an auditorium, billiards rooms, a library, a bar and restaurant makes wonderful outing for the day." Tibetan Monastery, Van Vihar, and "VASHIST" Well known for its hot springs. There are old temples dedicated to the sage Vashisth and to Lord Rama. Overnight stay at Manali. (Hadimba Devi Temple, Club House, Manu Temple, Van Vihar, Tibetan Monastery & Vashist Bath Hot Spring Water)
- Day 06:** Manali to Dharamshala. (250 KM) In the morning drive to Dharamshala on the way sightseeing Baijnath Temple (Shiva Temple), Palampur Tea Garden and Chamunda Devi Temple. Overnight stay at Dharamshala.
- Day 07:** Dharamshala -Dalhousie. (130 KM) After breakfast Visit Dharamshala local sightseeing (McLeodganj, Dalai Lama Temple, Naddi, & Dal Lake) & after lunch depart for Dalhousie. Situated at 2039 mts in the outer slope s of the Dhauladhar range with its natural beauty and natural surroundings. On arrival check- in at the hotel. Rest of the day for leisure and shopping. Overnight stay at Dalhousie.
- Day 08:** Dalhousie - Khajjiar - Dalhousie. (50 KM) Full day sightseeing to Khajjiar, 25 kms from Dalhousie. It's one of the most scenic saucer shaped Plateau and is surrounded by dense pine and deodar forests, its beauty has further been enhanced by a small lake in the center with a floating island and 9-hole golf course here are the other interesting places to cover. Return to Dalhousie and overnight stay at Dalhousie.
- Day 09:** Dalhousie - Amritsar. (190 KM) After Breakfast we checkout from Dalhousie and proceed for Amritsar by road on arrival check in at hotel and later visit Indo-Pak Wagah Border to watch Flag Retreat Ceremony- Wagah, an army outpost on Indo-Pak border 30 Kms from Amritsar where the daily highlight is the evening "Beating the Retreat" ceremony. Soldiers from both countries march in perfect drill, going through the steps of bringing down their respective national flags. As the sun goes down, nationalistic fervor rises and lights are switched on marking the end of the day amidst thunderous applause. Return to hotel. Overnight stay at Amritsar.
- Day 10:** Amritsar Local. After breakfast start your full day city tour with the blessings of Golden Temple-the most important Sikh shrine which is also called Mecca for the Sikhs is a living symbol of the spiritual and historical traditions of the Sikhs. Then visit Jallianwala Bagh- where, on April 13, 1919, British and Gurkha soldiers opened fire on an unarmed forbidden gathering, killing hundreds of civilians. Overnight stay at Amritsar.
- Day 11:** Amritsar to Delhi Drop. (500 KM) After breakfast we checkout from hotel and drop at Delhi Railway Station/Airport. TOURE END.

Package Category (Rate per Person)	OFF SEASON			PEAK SEASON		
	Min 2 Person	Min 4 Person	Min 6 Person	Min 2 Person	Min 4 Person	Min 6 Person
Deluxe	36000	26400	25800	43800	32400	31200
Super Dlx.	39600	30000	28800	48600	37200	35700

INCLUSION"

- Welcome drinks on arrival in hotels. (Nonalcoholic)
- 10 Nights' accommodation on double sharing basis
- 10 Breakfasts and 10 Dinners in hotel.
- 11 Days individual A/C Etios / Innova Car.
(A/C Working At Plain Area Hills Are Non A/C

NOTE: Up to 5 Years Child Free Without sea/bed. Above 5 years will be charge 50% Extra cost.

PEAK SEASON: VALID: 10TH APR 22 TO 04TH JUL 22 & 16TH DEC 22 TO 5TH JAN 23

Package Category	Shimla Hotels	Manali Hotels	Chandigarh Hotels	Dharamshala Hotels	Dalhousie Hotels	Amritsar Hotels
Deluxe	Sukh Sagar Reg	A Star Regency	Hotel Silky Resort	Anand Palace	Shining Star	RV Continental
Super Deluxe	The Grand Welcome Hotel & Spa	Hill County Resort	City Heart Premium Or Similar	Meghavan Resort	Hotel Dalhousie Grand	Roopa International